



Jan Kees Vis  
President RSPO  
Sustainable Agriculture Director  
Unilever

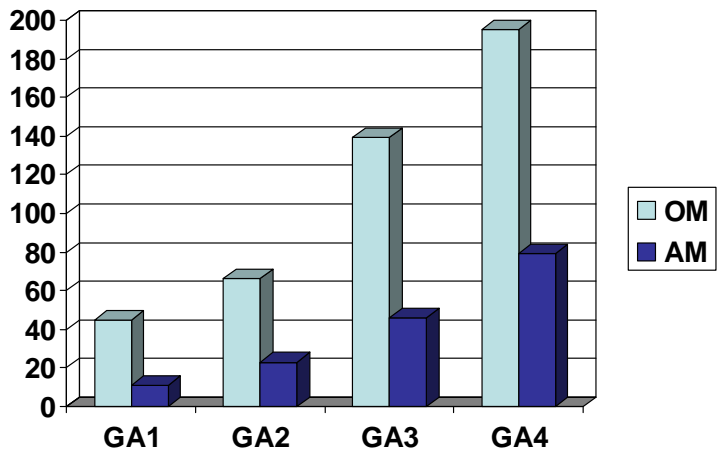
**RSPO**

Roundtable on Sustainable Palm Oil

**CSPO**

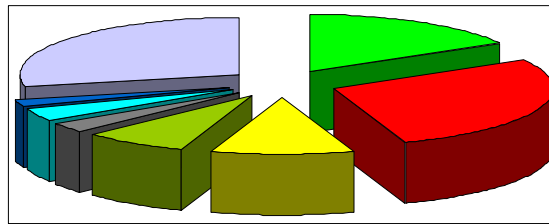
This presentation may contain forward-looking statements, including 'forward-looking statements' within the meaning of the United States Private Securities Litigation Reform Act of 1995. Words such as 'expects', 'anticipates', 'intends' or the negative of these terms and other similar expressions of future performance or results, including financial objectives to 2010, and their negatives are intended to identify such forward-looking statements. These forward-looking statements are based upon current expectations and assumptions regarding anticipated developments and other factors affecting the Group. They are not historical facts, nor are they guarantees of future performance. Because these forward-looking statements involve risks and uncertainties, there are important factors that could cause actual results to differ materially from those expressed or implied by these forward-looking statements, including, among others, competitive pricing and activities, consumption levels, costs, the ability to maintain and manage key customer relationships and supply chain sources, currency values, interest rates, the ability to integrate acquisitions and complete planned divestitures, physical risks, environmental risks, the ability to manage regulatory, tax and legal matters and resolve pending matters within current estimates, legislative, fiscal and regulatory developments, political, economic and social conditions in the geographic markets where the Group operates and new or changed priorities of the Boards. Further details of potential risks and uncertainties affecting the Group are described in the Group's filings with the London Stock Exchange, Euronext Amsterdam and the US Securities and Exchange Commission, including the Annual Report & Accounts on Form 20-F. These forward-looking statements speak only as of the date of this presentation.

## Membership development



**RSPO**

## Breakdown of membership



- Total members (16-04-08): 307  
(includes 220 ordinary members and 87 affiliate members)

**RSPO**



RSPO Code of Conduct:

All members are committed to production, procurement and use of sustainable palm oil

**RSPO**

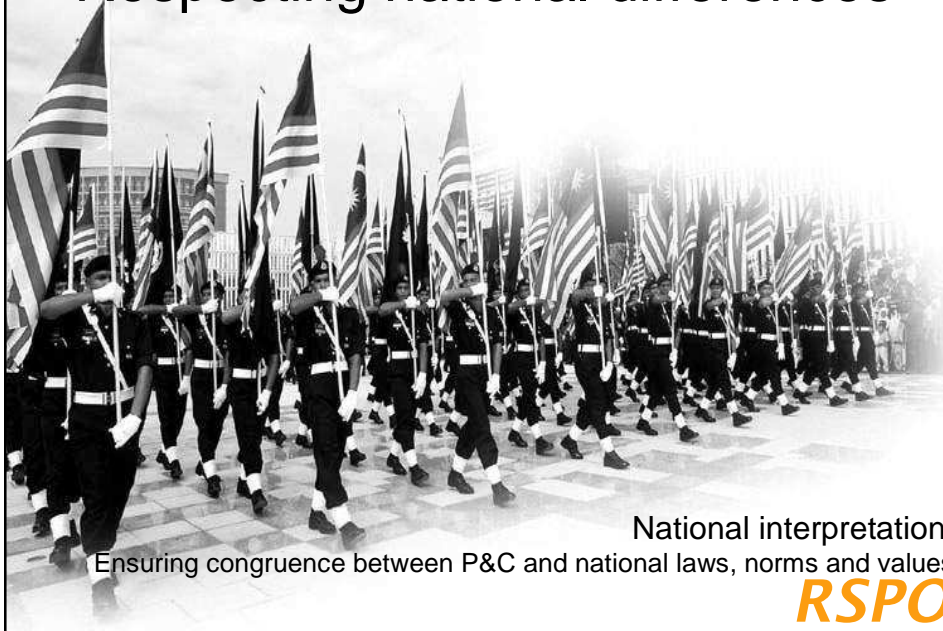
# What is sustainable palm oil?



- Defines sustainable palm oil production
- Basis for certification standard

**RSPO**

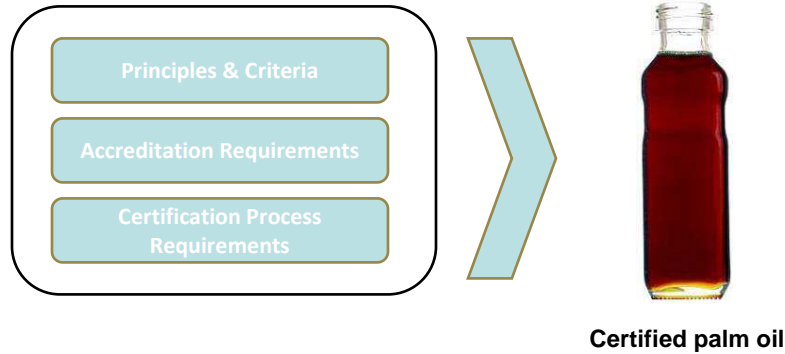
## Respecting national differences



National interpretation:  
Ensuring congruence between P&C and national laws, norms and values

**RSPO**

## Certification Systems



**RSPO**

## RSPO Time line

- April 2004: RSPO Created, first EB elected
- Nov 2004: CDG started
- Nov 2005: P&C Accepted, 2-year trial period starts
- Nov 2006: National Interpretation WGs start
  - Malaysia, Indonesia, Papua New Guinea, Colombia, Brazil
  - P&C Guidance Review starts (on basis of trials)
- Nov 2007: verification framework launched, P&C guidance reviewed on basis of trial period, NI's need to be approved, but P&C guidance is changing...
- March 2008: Approval of NI's, certification can start

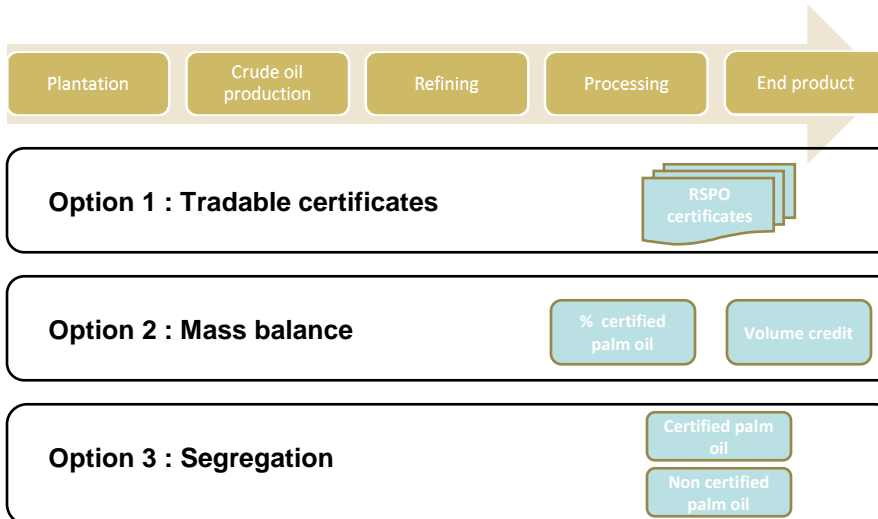
**RSPO**



## Engaging Smallholders

**RSPO**

### From plantation to end user



**RSPO**

## Largest RSPO members

Sime Darby*	2.200.000
Golden agri	1.608.000
Asiatic Dev	1.208.140
Wilmar	831.420
IOI Corp*	793.452
Kulim Bhd	363.750
LonSum	340.015
Boustead	248.135
Sampoerna Agro	240.000
United Plantations*	192.204
Bakrie S	159.773
IJM Plantations	139.313
KL Kepong*	134.981
Combined CPO volume	8.459.183

\*: Listed for certification

## Certifications announced

Company	Mill	Estates	CB	Dates	IO	Remarks
NBPOL	all mills	all estates	BSI (S)	4/5-18/5	nil	physical completed
Sime Darby	Binuang Oil Mill, Sabah	Binuang Estate, Sungang Estate, Tingkayu Estate,	SIRIM QAS	12-14/5	CST	physical completed
Sime Darby	Mostyn Oil Mill, Sabah	Mostyn Estate, Sabah	SIRIM QAS	15-17/5	CST	physical completed
Sime Darby	Giram Oil Mill, Sabah	Giram Estate,	SIRIM QAS	18-20/5	CST	physical completed
Sime Darby	Merotai Oil Mill, Sabah	Merotai Estate	SIRIM QAS	21-23/5	CST	physical completed
United Plantations	Jendarata Palm Oil Mill	Jendarata Estate,	Control Union	26-31/5	GR	physical completed
United Plantations	Seri Pelangi Palm Oil Mill	Seri Pelangi Estate, Changkat Menteri Estate	Control Union	26-31/5	GR	physical completed
United Plantations	Ulu Bernam Palm Oil Mill	Ulu Bernam Estate, Erong Estate	Control Union	26-31/5	GR	physical completed
United Plantations	Ulu Basir Palm Oil Mill	Ulu Basir Estate	Control Union	26-31/5	GR	physical completed
United Plantations	Lima Blas Palm Oil Mill	Lima Blas Estate	Control Union	26-31/5	GR	physical completed
United Plantations	Uiem Oil Mill	Estate 1, Estate 2	Control Union	26-31/5	GR	physical completed
IOI Corporation	Pamol Sabah Oil Mill	Ulu, Tindakon, Rungus, Meliau & Bayok Estates	SGS (M)	26-29/5	AS	physical completed
PT Musim Mas	Sorek Oil Mill	Sorek North Estate	Control Union	1-7/6		In progress now
PT Musim Mas	Pangkalan Lesung Mill	Sorek South Estate	Control Union	1-7/6		In progress now
PPB Oil Palms	Sapi Palm Oil Mill	Sapi Estate	Control Union	8-17/6		on schedule, Wilmar group
PPB Oil Palms	Reka Palm Oil Mill	Reka Estate	Control Union	8-17/6		on schedule, Wilmar group
PPB Oil Palms	Sabahmas Palm Oil Mill	Sabahmas Estate	Control Union	8-17/6		on schedule, Wilmar group
Hargy Oil Palms Limited (SIPEF)	HOPL Mills (2), Bital	HOPL estates, Bialla, PNG	BSI (S)	30/6		announced
Sime Darby	Sandakan Bay Palm Oil Mill	Associated estates	BSI (S)	TBA		Postponed from April
Sime Darby	Teluk Intan mills and estates	Teluk Intan mills and estates	SIRIM	TBA		TBA

## Challenges ahead

- CPO market is roughly EU 25 %, India 25 %, China 25 %, ROW 25 %. How big is the market for CSPO, how to sustain incentives for oil palm growers to join?
- How to involve “the other markets”?
- With CPO prices at 1200-1400 \$/ton (was 300-500 \$/ton), sector wants to expand. How to promote yield increase instead, and how to direct expansion to deforested land?
- How to organise traceability for derivatives?



**Thank you**

**[www.rspo.org](http://www.rspo.org)**